

# **DRO PROS**

*The Digital Readout Experts*

## **How to Install Magnetic Tape**

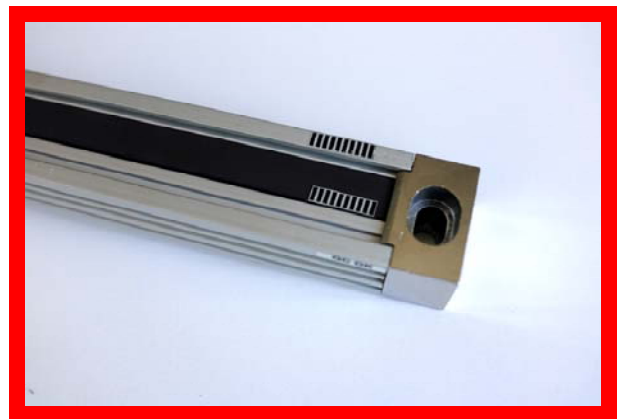
Congratulations on the purchase of your Electronica magnetic scale kit. It's the best kit we offer!

This document explains how to correctly orient the magnetic tape to the metal extrusion, or scale. Please pay close attention to the following pictures. Make sure you completely understand the correct tape orientation before you remove the protective film from the adhesive and apply the tape to the scale.

The following pictures illustrates the **correct** orientation between the magnetic tape and aluminum extrusion:



The following pictures illustrates an **incorrect** orientation between the magnetic tape and aluminum extrusion:



**WARNING:** Do not remove the protective film covering the adhesive and apply the magnetic tape until you completely understand what the proper tape orientation is. If you install the magnetic tape incorrectly, the tape cannot be removed and it's a costly mistake!

*If you have any questions, please call us at (707) 452-8434 - we're happy to help!*