



Please note the following points when installing your magnetic scale kit!

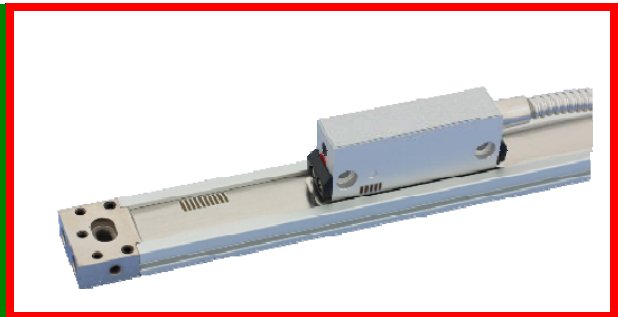
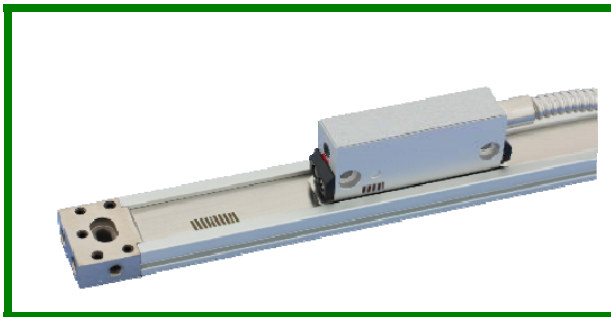


Make sure to check out the "Installation" page on the DRO PROS website. Here you will find literally hundreds of installation photos of how other customers installed their mill and lathe kits. Make your installation go faster and easier by studying how others did it before drilling holes!

You should have received a DVD detailing how to install your DRO kit. If not, see the "Videos" page on our website, www.dropros.com. Hint: If you scroll down the "Videos" page, the YouTube videos allow you to fast forward or jump ahead.

If you read nothing else before installing the kit, **please observe the following:**

- I. First check to make sure the scale is parallel to the travel of the machine. Run a dial indicator along the top and the side of the scale, **full travel, both directions**.
- II. Check the gap between the readhead and the scale. The proper gap is 0.5mm, or 20 thousands, and should be set using the included shim that comes with the kit.
- III. The scale and the readhead have hash marks that need to be installed on the same SIDE. The scale on the left will read correctly. The scale on the right will not. Note that the hash marks must be on the same **side**, not **end**, for the display to read correctly:



While the "Owners Manual" is okay, the cheat sheets on our "Library" page are much easier to understand, and more precise. Nearly every function and menu option is covered.

We recommend mounting the scale covers to the top of the endcaps, rather than drilling separate holes in your machine. Less holes to drill = less taps to break!

Standard readheads for our mill kits are 5 microns, or 5 μm . Our lathe kits typically come with a 1 μm for the cross slide (X axis), and a 5 μm for the carriage (Z axis). It's easy to accidentally swap one for the other. The label attached to the top of each readhead distinguishes the resolution of the readhead.

Look for the single number between the slash marks in the middle line:

Rh.No.BRN/**1**/0125/10 = 1 micron readhead (top label)

Rh.No.BRX/**5**/3007/10 = 5 micron readhead (bottom label)



If you have any questions or get stuck, call us toll free at (877) 628-6028. We're here to help!